

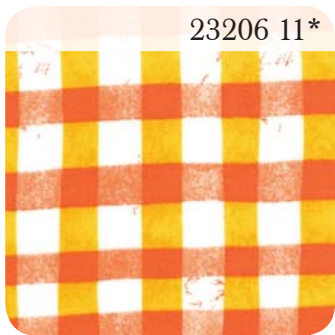
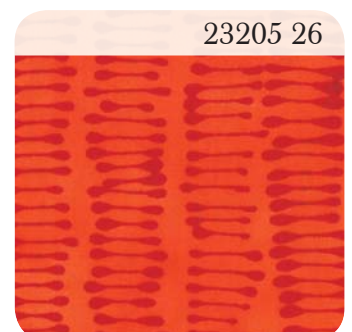
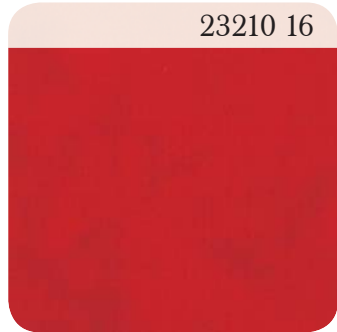
A Stitch In Color

by Malka Dubrawsky

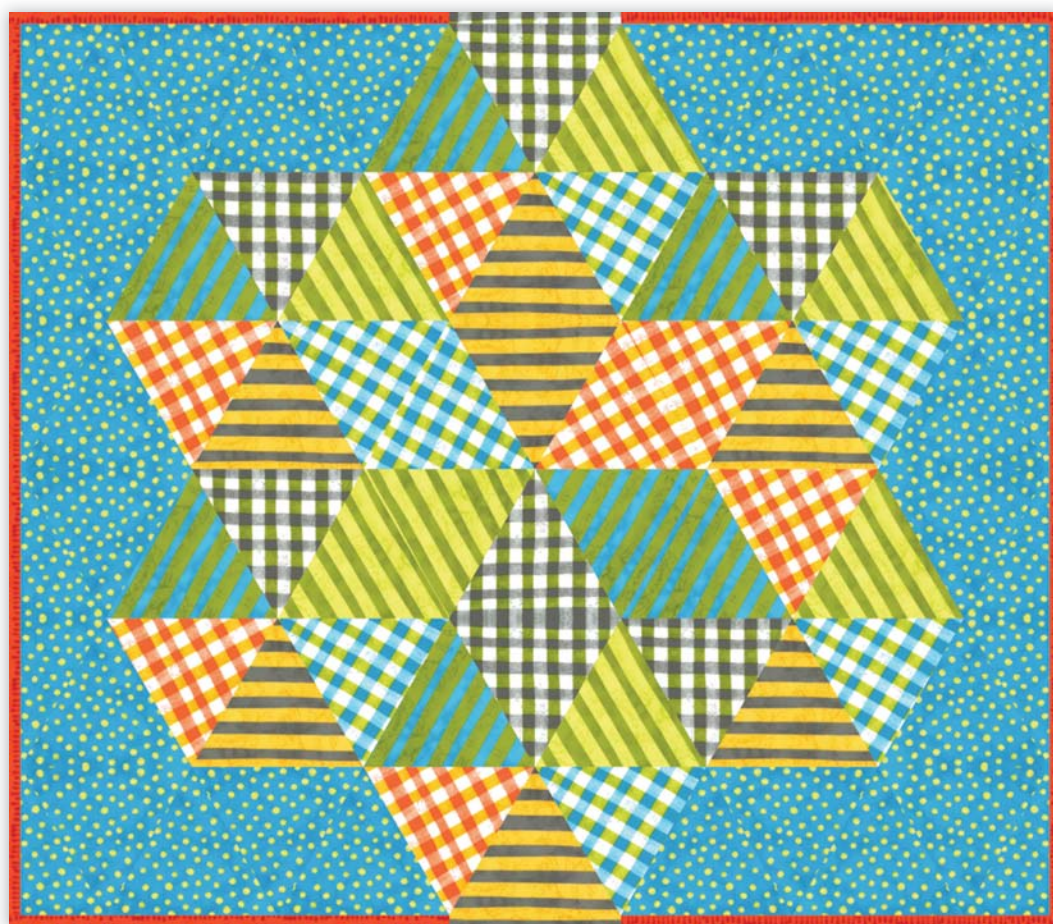
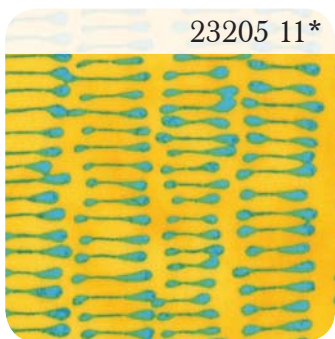
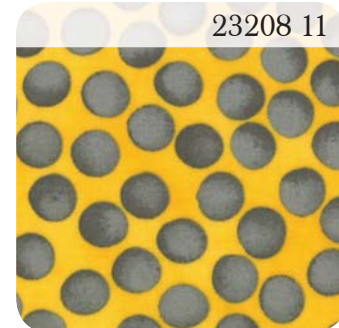
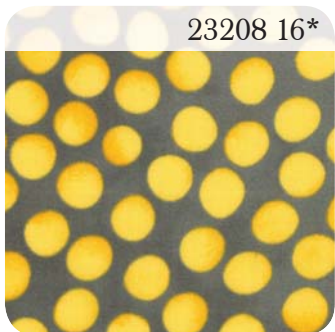
A Stitch In Color by Malka Dubrawsky for Moda © www.modafabrics.com



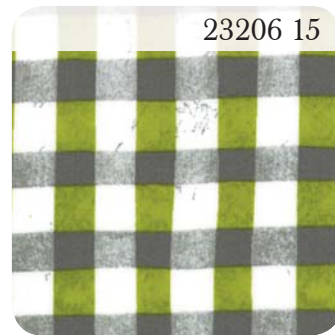
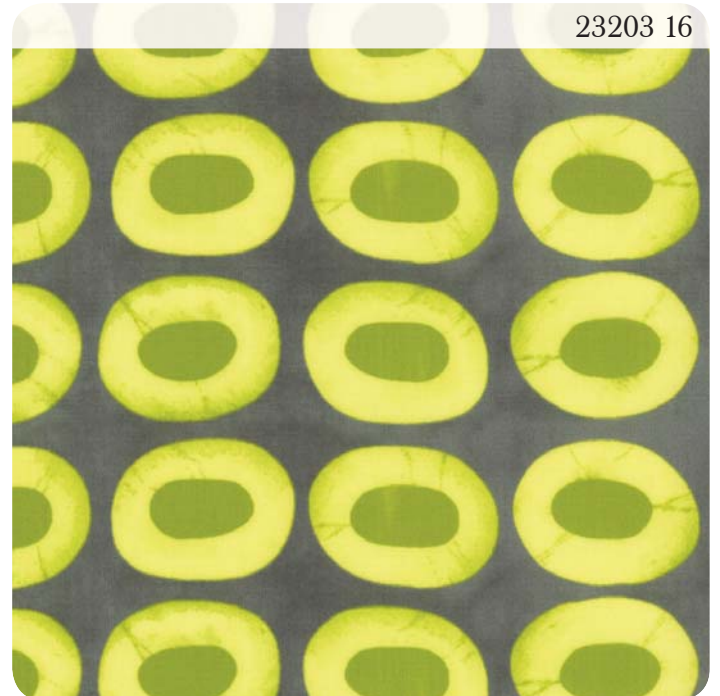
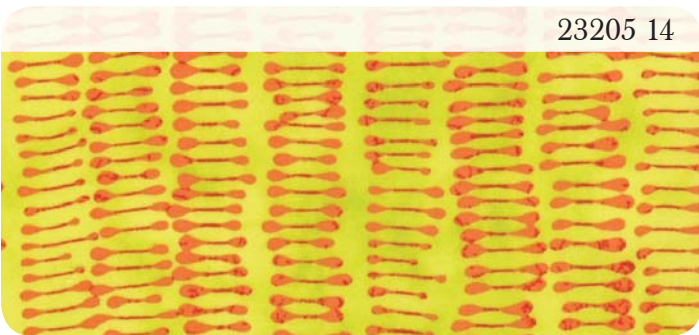
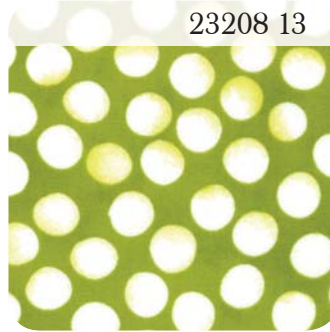
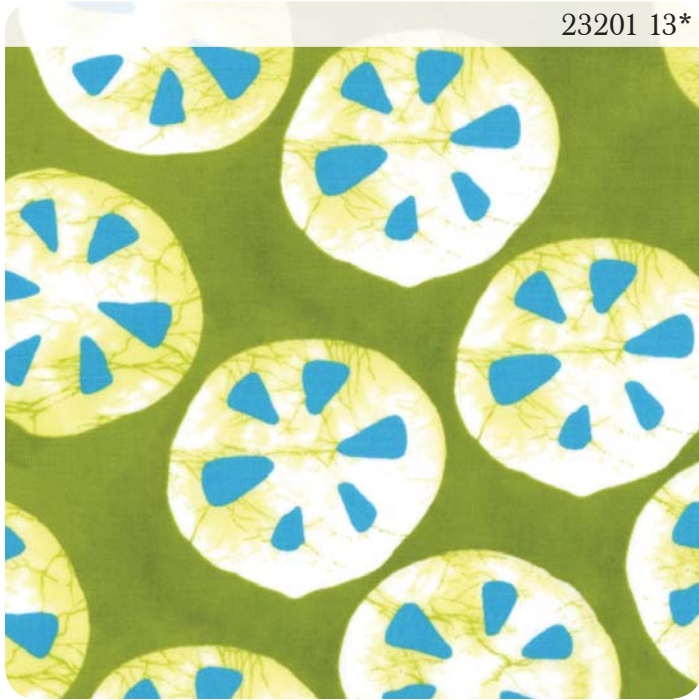
A Stitch In Color by Malka Dubrawsky for Moda ©

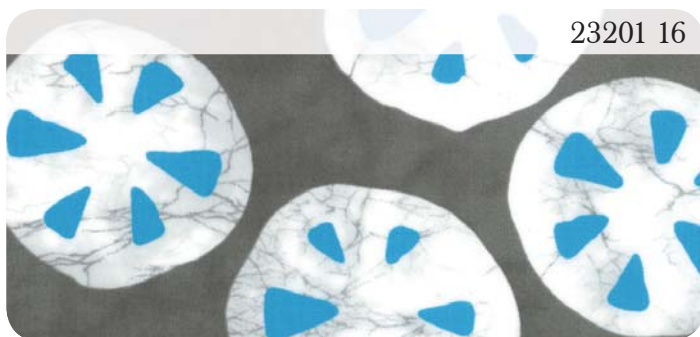


Simple, graphic patterns and bold colors define this collection and, frankly, my design aesthetic. These fabrics are inspired by the hand dyed and patterned batiks I've been making for years. They're fun and functional for a bevy of sewing projects, perfect for piecing into quilts or crafting garments. Used sparingly, they can infuse a bit of color among neutrals or if used throughout a project allow you to stitch away in luminous, artisan-crafted color.

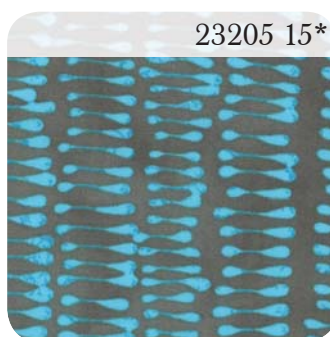


PS23200
Super Star Baby Quilt 34" x 30"

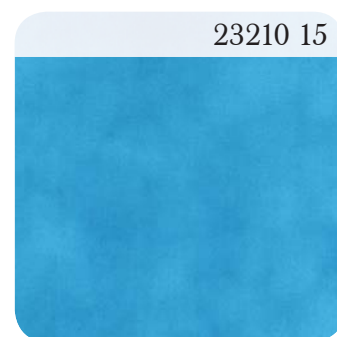




23201 16



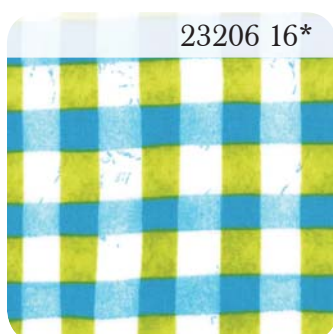
23205 15*



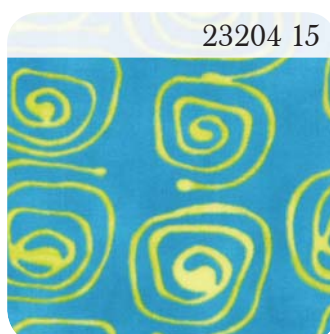
23210 15



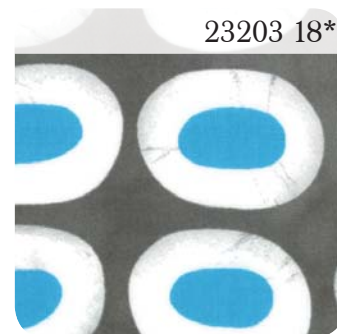
23209 16*



23206 16*



23204 15



23203 18*



23200 11*



23201 17*

A Stitch in Color

by Malka Dubrawsky

January 2012 Delivery

Prints: 40

44" - 45" 100% Cotton

- Asst. 23200-15 15 Yards of Each
- Asst. 23200-12 12 Yards of Each
- Asst. 23200-10 10 Yards of Each
- Asst. 23200-10H 10 Yards of 20 Skus
- 23200AB Bundle: 40 Skus 18" x 22"
- 23200F8 Bundle: 40 Skus 9" x 22"
- 23200JR Jellyroll (40) 2 1/2"x45" Strips - PK 4
- 23200LC Layer Cake (42) 10"x10" Squares - PK 4
- 23200PP (42) 5"x5" Squares - PK 12
- PS23200 Project Sheet - PK 25

<http://stitchindye.blogspot.com>

moda